



Contact



[www.activeaudio.fr](http://www.activeaudio.fr)  
[Info@activeaudio.fr](mailto:Info@activeaudio.fr)

332 Bd Marcel Paul – CP602 – 44806 ST-HERBLAIN Cedex – FRANCE  
Tel. +33 (0)2 40 46 66 64 - Fax : +33 (0)2 51 80 97 97

ENG www.eu.reka-design.fr / Photos produits : Marylér.mounier / Vincent Bauza



# Ray-On

Acoustics meets Architecture

Active  
audio  
L'acoustique active

## Birth of Ray-On

The Ray-On Range was born from our wish to offer StepArray's DGRC\* technology to a wider audience.

The Ray-On Range draws on key features of our high-end DSP columns – such as directivity – while competing with conventional passive speakers in terms of affordability. As with all Active Audio products, intelligibility and ease of installation were priorities in the design process.

A discrete and elegant column, Ray-On was designed to be mounted vertically and does not require any tilting, which allows it to blend in even in the most stylish environments.

\* Digital and Geometric Radiation Control. Patented technology.





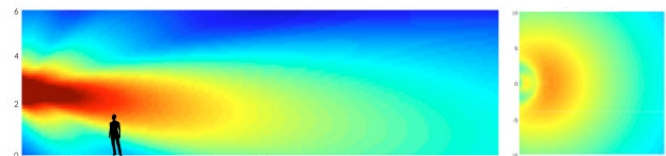
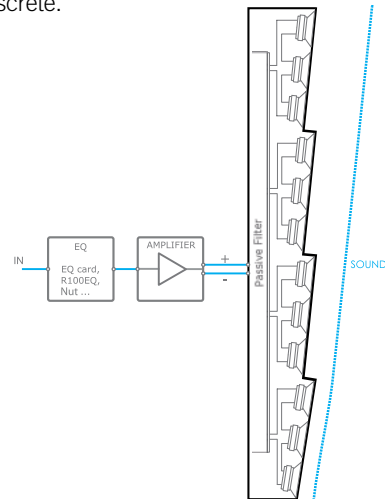
# Ray-On Acoustics and Aesthetics

The Ray-On range includes four passive column loudspeakers of 0.2 up to 2 meters in height, based on the patented DGRC principle. This innovation provides a homogeneous sound coverage and perfect speech intelligibility over the entire audience area. It equals high-end directivity control sound systems.

The elegant design of the columns, with their finely perforated grilles, yields optimum results in terms of integration and aesthetics. Being vertically mounted, and not tilted off the walls, the Ray-On columns remain extremely discrete.

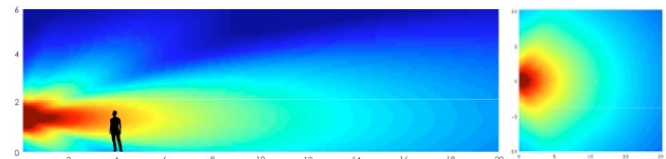


DGRC principle



Sound coverage, **Ray-On 100**, DGRC column

horizontal view



Sound coverage, **standard** 1m column

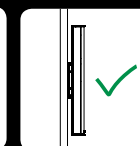
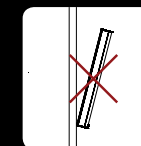
horizontal view

Models available for EASE & CATT-Acoustic™

Active  
audio



- Listening comfort
- Even sound coverage
- Perfect speech intelligibility
- Elegance and discretion



Vertical mounting

# Ray-On Easy Installation

For indoor and outdoor installations, their mounting system allows quick and effortless vertical installation. The equalization is the same for every model. It is then possible to cascade different Ray-On models on the same 100V line. The equalization can be achieved with NUT, R100EQ, or any other parametric equalizer.

To take full advantage of Ray-On, several amplifiers and a range of accessories are available : equalization processor, stand mount, EQ card for CLOUD amplifiers.

- Vertical mounting
- Switch 8  $\Omega$  / 100V
- Perfect intelligibility
- EN54-24 compliant
- Paintable



R100EQ accessory

100V version



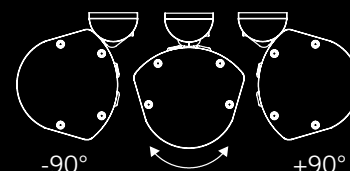
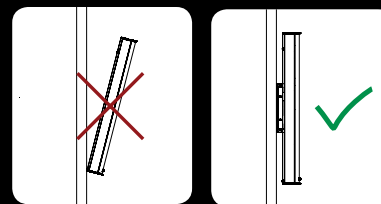
Amplifier Active Audio CXV225  
Amplifier Active Audio CXV425  
+  
EQ Card



Stand mounting

## Vertical mounting

With its mounting system, the column loudspeaker is set vertically against the wall. Therefore it becomes almost a part of the wall.



Rotation, seen from above



Wall bracket for R200, R100 and R60



Wall bracket for Rmini with integrated connector

# Security PA system

When sound systems are used for security message announcements (fire safety messages for instance), loudspeakers must be EN5424 certified (type A for indoor use, type B for outdoor). It is often the case with railway stations, airports and other transport hubs.

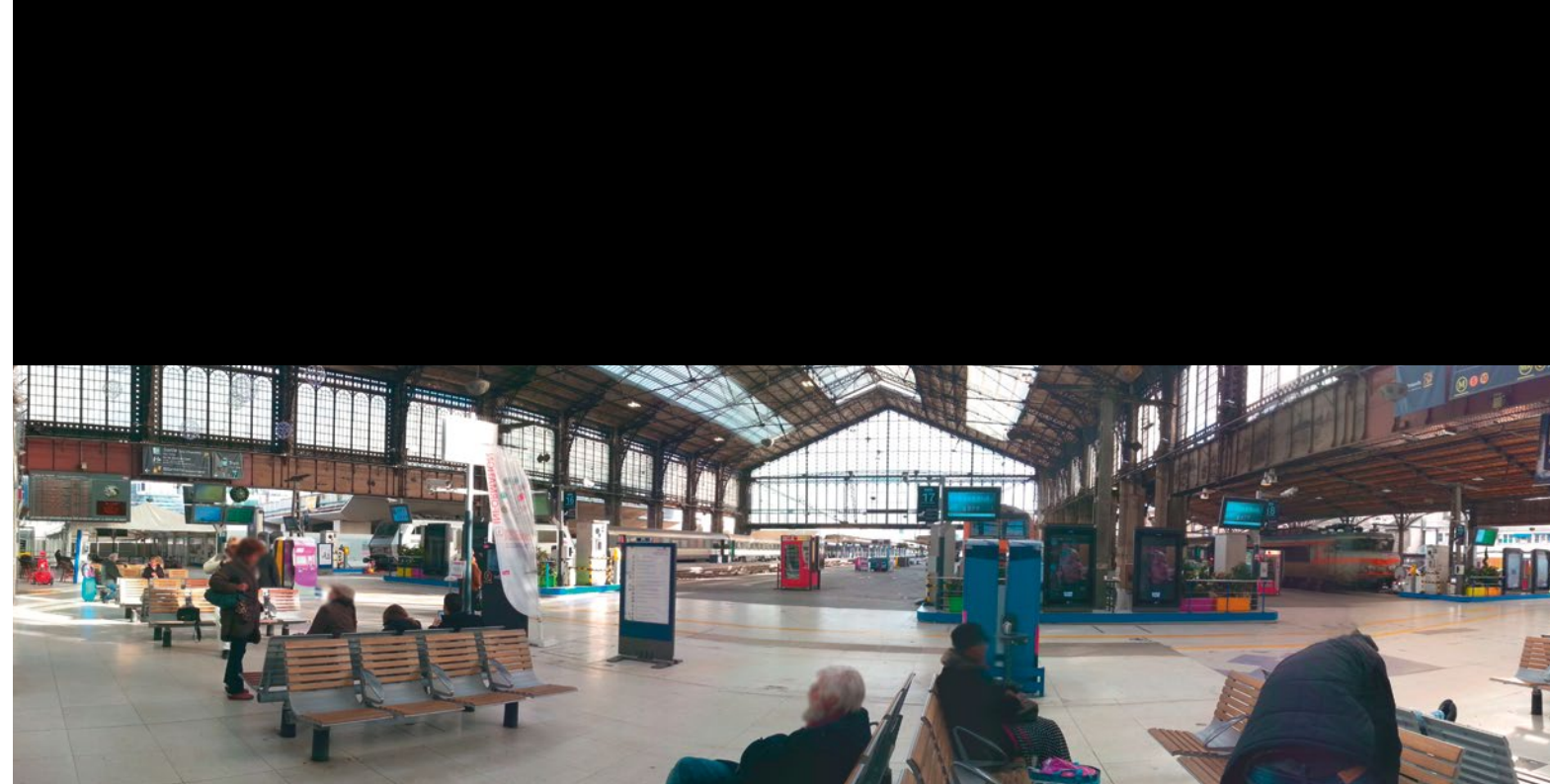
Ray-On column loudspeakers are equipped with drivers for outdoor use, thermal fuses, ceramic terminal blocks, and fireproof cables. Their enclosure is made of aluminum.

They are EN5424 type B compliant.

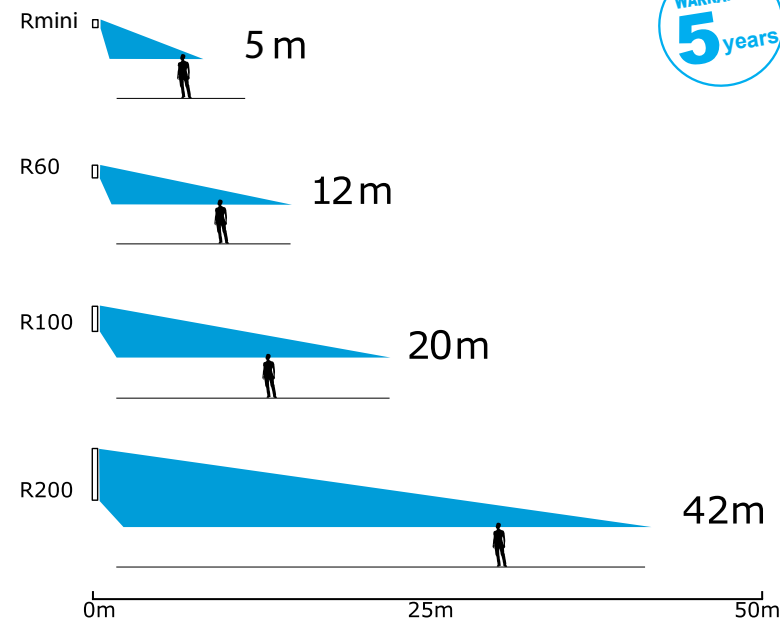
- IP54 compliant
- IK08 compliant
- Certified EN54-24 type B



EN54-24



# Technical data



Range at  $\pm 5$ dB - column at its nominal mounting height



Active  
audio

## Rmini

Acoustical data	Mode 8 $\Omega$	Mode 100V
SPL max	91 dB at 5 m	91 / 94 / 97 dB at 5 m
Range at $\pm 5$ dB	3,2m / 5 m	
Sensitivity	84 dB / W at 1m	
Frequency response at -3dB / -10dB	150Hz - 16,5kHz / 120Hz - 18kHz	
Vertical directivity at -6dB	135° at 500Hz / 85° at 1 kHz 40° at 2kHz / 30° at 4kHz	
Horizontal opening angle at -6dB	280° at 500Hz / 180° at 1kHz 180° at 2kHz / 160° at 4kHz	
Electrical data	Mode 8 $\Omega$	Mode 100V
Continuous power	30 W	7,5W / 15W / 30W
Nominal impedance	6 $\Omega$	1333 / 667 / 333 $\Omega$
Protection	Thermal fuse	
Recommended equalization	Speech : 4 param. cells Music : 6 param. cells	
Connector	Ceramic terminal block screw	
Mechanical data	Mode 8 $\Omega$	Mode 100V
Net / shipping weight	2 kg / 2,7 kg	
Dimensions H x W x D	192 x 128 x 117 mm	
Environment	Indoor, outdoor - IP54, from -25°C to 55°C	
Colors	Black (RAL9005) ; White (RAL9016 paintable)	
Mounting	Flush and mast mounting	
Nominal mounting height seating/standing audience	170 cm / 210 cm	
Materials	Body : aluminum, grid : steel treated against rust and UV	
Modeling	EASE and CATT-Acoustic	



## R60

Acoustical data	Mode 8 $\Omega$	Mode 100V
SPL max	91 dB at 5 m	85 / 88 / 91 dB at 5 m
Range at $\pm 3$ dB / $\pm 5$ dB	6,5m / 12m	
Sensitivity	71 dB / W at 5m	
Frequency response at -3dB / -10dB	150Hz - 14,5kHz / 120Hz - 17kHz	
Vertical directivity	Wavefront synthesis	
Horizontal opening angle 1kHz / 4kHz	$\pm 100^\circ$ / $\pm 70^\circ$	
Electrical data	Mode 8 $\Omega$	Mode 100V
Continuous power	75 W	18W / 36W / 72W
Nominal impedance	8 $\Omega$	556 / 278 / 139 $\Omega$
Protection	Thermal fuse	
Recommended equalization	Speech : 4 param. cells Music : 6 param. cells	
Connector	Ceramic terminal block screw	
Mechanical data	Mode 8 $\Omega$	Mode 100V
Net / shipping weight	5,2 kg / 5,7 kg	
Dimensions H x W x D	611 x 128 x 117 mm	
Environment	Indoor, outdoor - IP54, from -25°C to 55°C	
Colors	Black (RAL9005) ; White (RAL9016 paintable)	
Mounting	Flush and mast mounting	
Nominal mounting height seating/standing audience	170 cm / 210 cm	
Materials	Body : aluminum, grid : steel treated against rust and UV	
Modeling	EASE and CATT-Acoustic	



## R100

Acoustical data	Mode 8 $\Omega$	Mode 100V
SPL max	92 dB at 8 m	84 / 87 / 90 dB at 8 m
Range at $\pm 3$ dB / $\pm 5$ dB	15m / 20m	
Sensitivity	72dB / W at 8m	
Frequency response at -3dB / -10dB	150Hz - 16,5kHz / 120Hz - 18kHz	
Vertical directivity	Wavefront synthesis	
Horizontal opening angle 1kHz / 4kHz	$\pm 100^\circ$ / $\pm 70^\circ$	
Electrical data	Mode 8 $\Omega$	Mode 100V
Continuous power	150 W	25W / 50W / 100W
Nominal impedance	8 $\Omega$	400 / 200 / 100 $\Omega$
Protection	Thermal fuse and protection against overload	
Recommended equalization	Speech : 4 param. cells Music : 6 param. cells	
Connector	Ceramic terminal block screw	
Mechanical data	Mode 8 $\Omega$	Mode 100V
Net / shipping weight	8,3 kg / 9,1 kg	
Dimensions H x W x D	1026 x 128 x 117 mm	
Environment	Indoor, outdoor - IP54, from -25°C to 55°C	
Colors	Black (RAL9005) ; White (RAL9016 paintable)	
Mounting	Flush and mast mounting	
Nominal mounting height seating/standing audience	190 cm / 230 cm	
Materials	Body : aluminum, grid : steel treated against rust and UV	
Modeling	EASE and CATT-Acoustic	



## R200

Acoustical data	Mode 8 $\Omega$	Mode 100V
SPL max	94,5 dB at 16 m	84 / 87 / 90 dB at 16 m
Range at $\pm 3$ dB / $\pm 5$ dB	31m / 42m	
Sensitivity	71dB / W at 16m	
Frequency response at -3dB / -10dB	150Hz - 16,5kHz / 120Hz - 19kHz	
Vertical directivity	Wavefront synthesis	
Horizontal opening angle 1kHz / 4kHz	$\pm 100^\circ$ / $\pm 70^\circ$	
Electrical data	Mode 8 $\Omega$	Mode 100V
Continuous power	300 W	25W / 50W / 100W / 200W
Nominal impedance	8 $\Omega$	400 / 200 / 100 / 50 $\Omega$
Protection	Thermal fuse and protection against overload	
Recommended equalization	Speech : 4 param. cells Music : 6 param. cells	
Connector	Ceramic terminal block screw	
Mechanical data	Mode 8 $\Omega$	Mode 100V
Net / shipping weight	16,2 kg / 17,8 kg	
Dimensions H x W x D	1977x 128 x 117 mm	
Environment	Indoor, outdoor - IP54, from -25°C to 55°C	
Colors	Black (RAL9005) ; White (RAL9016 paintable)	
Mounting	Flush and mast mounting	
Nominal mounting height seating/standing audience	210 cm / 250 cm	
Materials	Body : aluminum, grid : steel treated against rust and UV	
Modeling	EASE and CATT-Acoustic	

